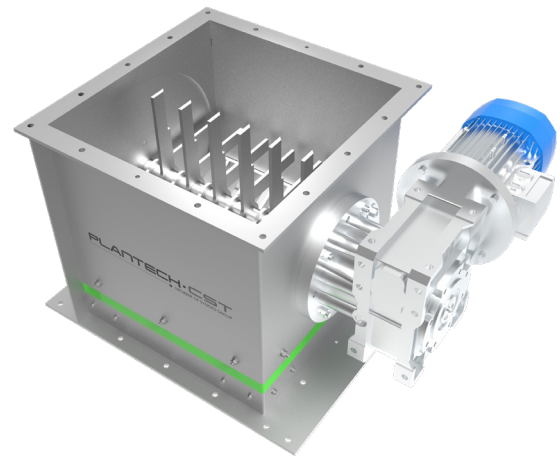




# LBK

## Lump Breaker “LBK”

The lump breaker LBK is a compact and robust machine engineered to break product discharged from hoppers, that have clumped together but are easily crumbled.



### PRINCIPLE OF OPERATION

The lump breaker LBK is a versatile machine which can be used in different industrial fields such as chemical, food and plastic. It constitutes a rectangular body with upper and bottom flange, a rotary shaft with integrated blades, an upper grid to hold the biggest particles and a motor gearbox to drive the shaft. Due to the rotation of the blades the clumped product is crushed, the unit is also equipped with a front door for easy inspection and cleaning.

### MAIN FEATURES

#### INSTALLATIONS

The small size of the LBK lump breaker allows it to be installed on existing lines or new systems. It can also be used to discharge products from filters, mixers or other process equipment. The LBK lump breaker is easy to install and can be fixed on either the upper or lower flange.

#### OPTION AVAILABLE

The lump breaker LBK is available in different versions:

- Painted carbon steel;
- Stainless steel AISI304;
- Stainless steel AISI316.

As an option, the LBK lump breaker can be designed for high temperatures applications and can be ATEX and/or FDA compliant.

TECHNICAL DATA

